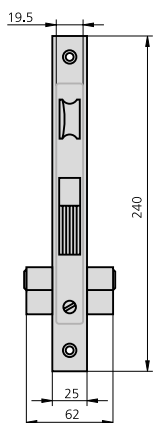


**PALANCA GANCHO ENTRE EJES 85 CILINDRO EUROPERFIL**

**SERIE 1990**



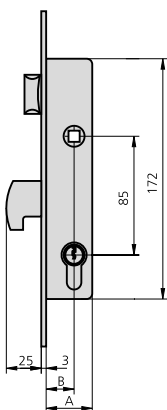
**CARACTERÍSTICAS**

- Frente hierro niquelado o acero inoxidable
- Caja bicromatada
- Palanca basculante de gancho
- Picaporte reversible
- Cuadradillo de 8 mm
- Cilindro europerfil
- 2 escudos de nylon ref. ES1984
- Tornillo de fijación de cilindro

**ACCESORIOS OPCIONALES**

- Gama completa de cilindros

DESCRIPCIÓN	REF.	MEDIDAS		LEVA	ACABADOS		UDS	
		B	A		FRENTE	CILINDRO		

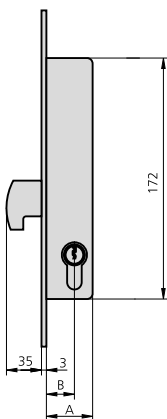


- Picaporte y palanca
- Cilindro 5990/2525 o 5982/2525
- Cerradero CE1990/0

**Opciones cerraderos eléctricos**

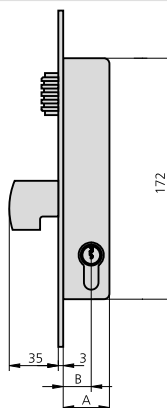
- CELC45/6A o CELC45/6AD

1990/20/0	20	33	13,25	HN	CN	1	20
1990/20/5	20	33	13,25	HN	CL	1	20
1990/20/6	20	33	13,25	AI	CN	1	20
1990/25/0	25	38	13,25	HN	CN	1	20
1990/25/5	25	38	13,25	HN	CL	1	20
1990/25/6	25	38	13,25	AI	CN	1	20
1990/32/0	32	47	15	HN	CN	1	20
1990/32/5	32	47	15	HN	CL	1	20
1990/32/6	32	47	15	AI	CN	1	20



- Sólo palanca
- Cilindro 5990/2525 o 5982/2525
- Cerradero CE1990/0

1990A20/0	20	33	13,25	HN	CN	1	20
1990A20/5	20	33	13,25	HN	CL	1	20
1990A20/6	20	33	13,25	AI	CN	1	20
1990A25/0	25	38	13,25	HN	CN	1	20
1990A25/5	25	38	13,25	HN	CL	1	20
1990A25/6	25	38	13,25	AI	CN	1	20
1990A32/0	32	47	15	HN	CN	1	20
1990A32/5	32	47	15	HN	CL	1	20
1990A32/6	32	47	15	AI	CN	1	20



- Rodillo vaivén regulable y palanca
- Cilindro 5990/2525 o 5982/2525
- Cerradero CE1990/0

1990V20/0	20	33	13,25	HN	CN	1	20
1990V20/5	20	33	13,25	HN	CL	1	20
1990V20/6	20	33	13,25	AI	CN	1	20
1990V25/0	25	38	13,25	HN	CN	1	20
1990V25/5	25	38	13,25	HN	CL	1	20
1990V25/6	25	38	13,25	AI	CN	1	20
1990V32/0	32	47	15	HN	CN	1	20
1990V32/5	32	47	15	HN	CL	1	20
1990V32/6	32	47	15	AI	CN	1	20